

stryker

Signature 2 Portfolio
**iBur integrated
attachments**

Picture
perfect
view



iBur

Compatibility expands capability

The iBur family is designed for versatility, allowing use with a wide range of Stryker equipment. This includes backwards compatibility to equipment you may already own, expanding your capabilities while streamlining your capital costs, workspace and product training.

CORE 2 Console customization

- Exclusive I.D. Touch software enables you to define electric drill response/sensitivity to the precise tactile feel you want
- Unparalleled user preference settings, including torque level, oscillation and irrigation rates, RPMs, braking/acceleration and fixed/variable modes
- Preferences instantly activate based on user ID or connected device



Drill power, precision and reliability

- Electric and pneumatic motors
- Applicable for a range of clinical specialties and procedures
- Reflect Stryker's 70-year legacy as a power tool pioneer



πdrive 2 and πdrive 2+ electric motors



Maestro and Maestro Air pneumatic motors

Signature Portfolio breadth and depth

- Most comprehensive drill platform with 100+ components for enormous flexibility and choice
- Created through collaboration with surgeons like you
- Four motors, 34 attachments and 750+ cutting accessories to fulfill needs across multiple specialties
- Color coded for intuitive pairing, ordering, setup and use

Angled to perfection

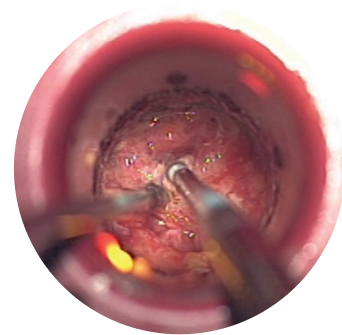
Less visual obstructions. Less components. Less hassles. As an all-inclusive angled attachment, cutting accessory and irrigator the iBur family provides a direct view of the bur tip on the surgical surface so you'll always know where you stand. And this integrated design also simplifies use and amplifies efficiency. Created by your request, iBur attachments become the fifth family within Signature Portfolio to help you see and perform your best.

Common applications include neuro; spine, including laminotomy/laminectomy and MIS spine; ENT/otorhinolaryngology, including expanded endonasal approach (EEA)/anterior skull base and endoscopy procedures.

100%
of surgeons
could see the
head of the bur¹

"The iBur provides a competitive advantage in its design, irrigation and **line of sight**"²

Spine surgeon



16 sterile, single-use attachments with 15° proximal or distal bend for enhanced access and direct view of bur on surgical surface

Integrated attachment, cutting accessory and irrigator simplifies ordering, setup and use

Protective shank covers shaft to guard against rotational harm

Efficient, on-point delivery of irrigation

Adhesive irrigation tab secures to motor

Low, slim profile with tapered, concave design enables direct line of sight

Reusable straight or angled hubs with locking studs, color coding and alignment dots for motor and cutting accessory

Machined-textured, fine-edge knurling for secure grip and comfort

A variety of bur head styles and diameters

"I like the fact the shaft is integrated. The irrigation component is nice...it did not get hot at all."²

Spine surgeon

100%
successful set up rate¹

Burs for every need

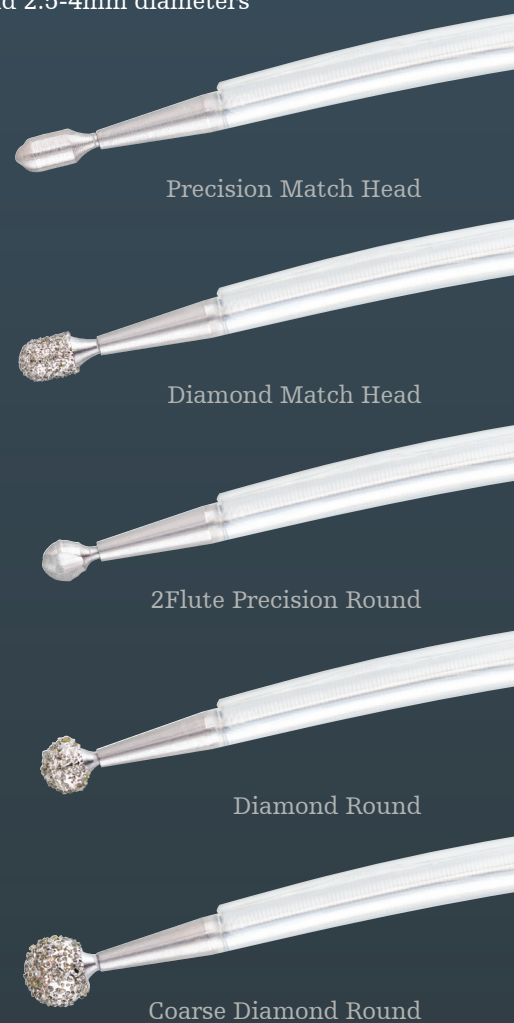
The iBur attachments come in numerous head styles, including our 2Flute geometric design engineered with RIM Glide technology for 25% less chatter³. Armed with a wealth of options, you can drill, ream, decorticate, shape, dissect, shave and smooth bone with precision and confidence. (See back cover for all options.)

Distally-bent cutting accessories

10 burs spanning five design styles and 2-5mm diameters

Proximally-bent cutting accessories

6 burs spanning three design styles and 2.5-4mm diameters



Precision Match Head

Diamond Match Head

2Flute Precision Round

Diamond Round

Coarse Diamond Round

Making healthcare better, one instrument at a time

We value our collaboration with you. So when you asked for attachments like iBur, we listened and delivered. By optimizing your surgical site view, iBur attachments aim to improve your procedural experiences and – combined with your skill – procedural outcomes. To trial iBur attachments or to get more information contact your Neurosurgical sales representative, call **800 253 3210** or visit **neurosurgical.stryker.com**.

1. Stryker design validation completed for iBur devices, data on file
2. Source and consent on file
3. Stryker data on file. Precision Round geometry shows 25% less chatter when compared to Multiflute Round geometry on the Elite cutting accessory system. D0000006486

Part number	Product description
iBur integrated attachments, cutting accessories with irrigation	
Hubs	
5407-120-300	iBur Hub
5407-120-300A	iBur Angled Hub
15° Distal bend (12.5cm, orange color band)	
8431-107-530	3.0mm iBur Precision Match Head
8431-107-030D	3.0mm iBur Diamond Match Head
8431-009-030	3.0mm iBur Precision Round
8431-009-040	4.0mm iBur Precision Round
8431-012-020D	2.0mm iBur Diamond Round
8431-012-030D	3.0mm iBur Diamond Round
8431-012-040D	4.0mm iBur Diamond Round
8431-013-030DC	3.0mm iBur Coarse Diamond Round
8431-013-040DC	4.0mm iBur Coarse Diamond Round
8431-013-050DC	5.0mm iBur Coarse Diamond Round
15° Proximal bend (12.5cm, orange color band)	
8442-107-525	2.5mm iBur Precision Match Head
8442-107-530	3.0mm iBur Precision Match Head
8442-107-025D	2.5mm iBur Diamond Match Head
8442-107-030D	3.0mm iBur Diamond Match Head
8442-009-030	3.0mm iBur Precision Round
8442-009-040	4.0mm iBur Precision Round
Motors	
5407-150-000	Pi Drive 2 Motor
5407-350-000	Pi Drive 2 Plus Motor
5400-200-000	Maestro
5400-201-000	Maestro with handswitch
5407-200-000	Maestro Air
5407-200-00H	Maestro Air with handswitch

Neurosurgical

This document is intended solely for the use of healthcare professionals. A surgeon must always rely on his or her own professional clinical judgment when deciding whether to use a particular product when treating a particular patient. We do not dispense medical advice and recommend that surgeons be trained in the use of any particular product before using it in surgery.

The information presented is intended to demonstrate Stryker's products. A surgeon must always refer to the package insert, product label and/or instructions for use, including the instructions for cleaning and sterilization (if applicable), before using any of Stryker's products. Products may not be available in all markets because product availability is subject to the regulatory and/or medical practices in individual markets. Please contact your representative if you have questions about the availability of Stryker's products in your area.

Stryker or its affiliated entities own, use, or have applied for the following trademarks or service marks: CORE, iBur, I.D. Touch, Maestro, Maestro Air, π drive 2, π drive 2+, RIM Glide, and Stryker. All other trademarks are trademarks of their respective owners or holders.